

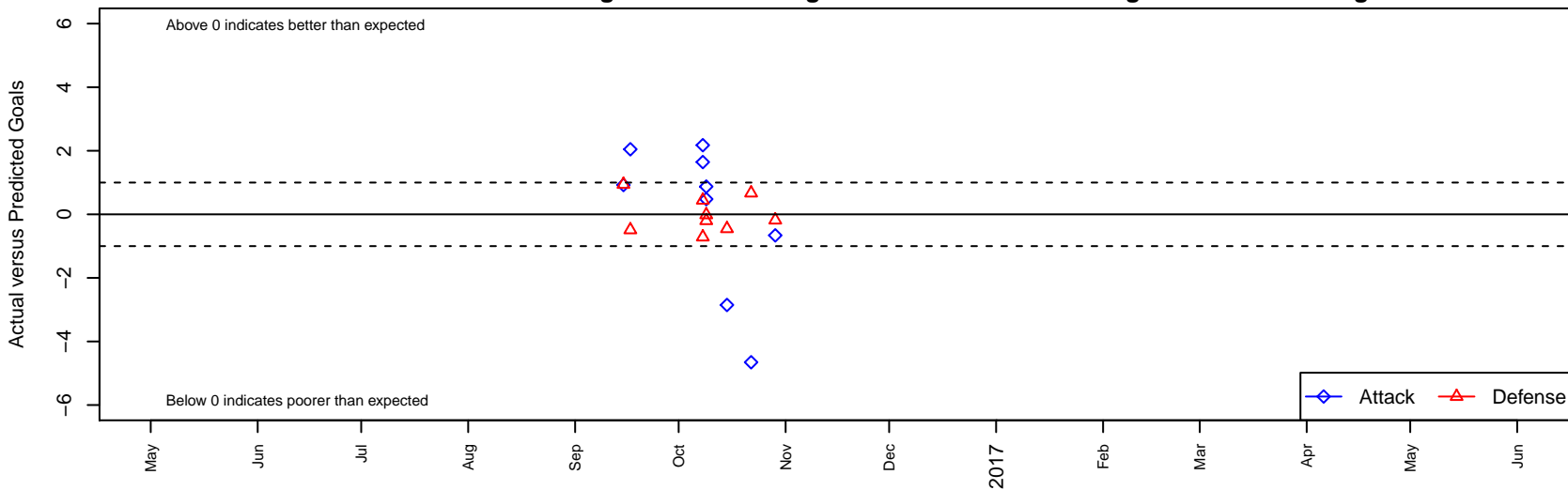
Canyon Optimit Inferno B05

Caldwell, ID
 B05 total strength=865
 attack=1.97 defense=0.8
 fall league = Idaho D3 U12 East U12
 notes= Nye 2016

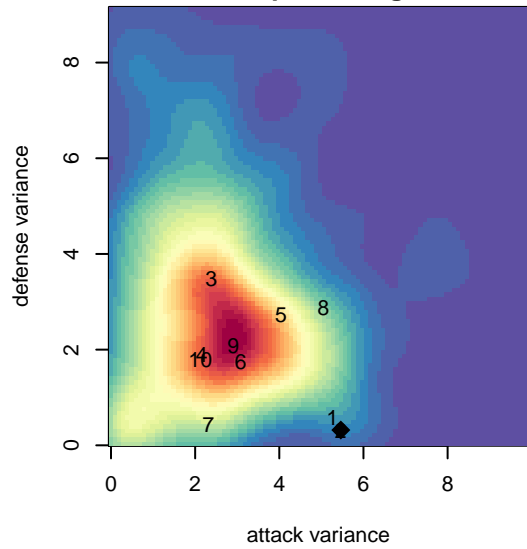
alt names used:
 INFERNO (ID)
 INFERNO

Venues played:
 2016 Idaho D3 U12 East U12
 2016 GEM State Challenge U12B Silver West l

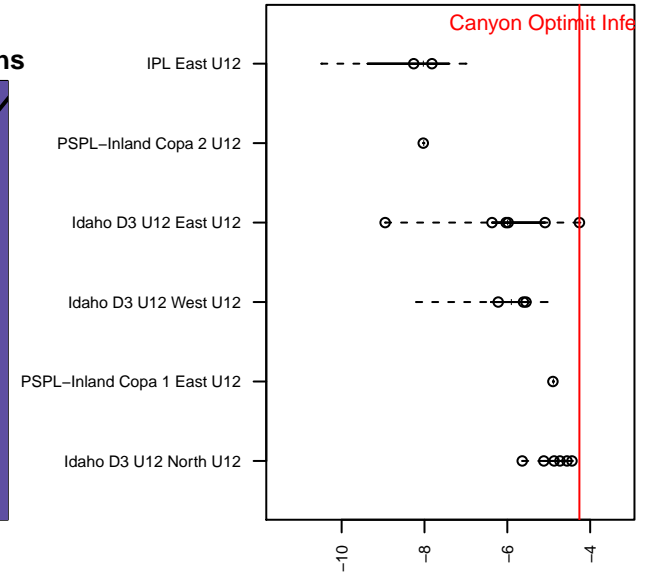
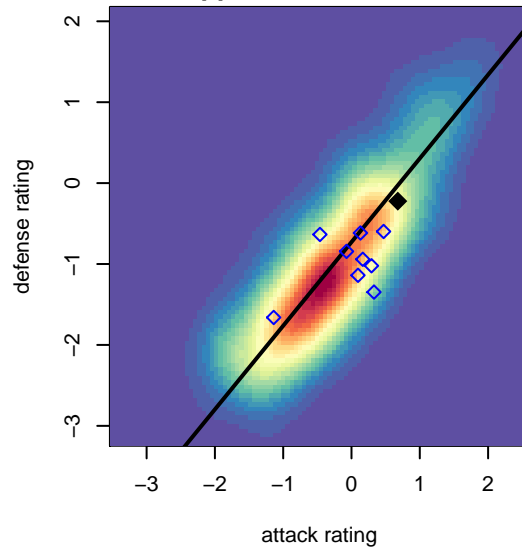
Canyon Optimit Inferno B05
 Dots are actual minus expected GF (blue circles) and GA (red triangles).
 Blue line is smoothed change in attack strength. Red is smoothed change in defense strength.



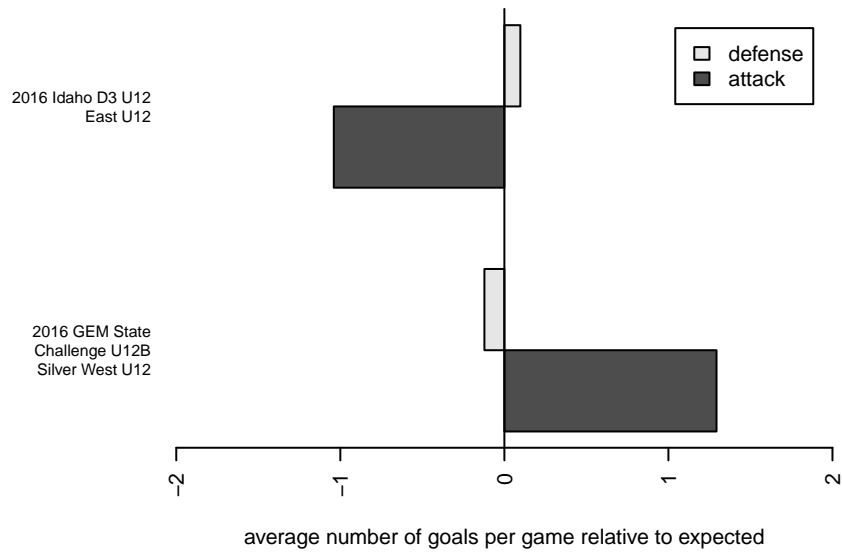
**attack and defense variance (black dot)
relative to other teams
and top 10 in region**



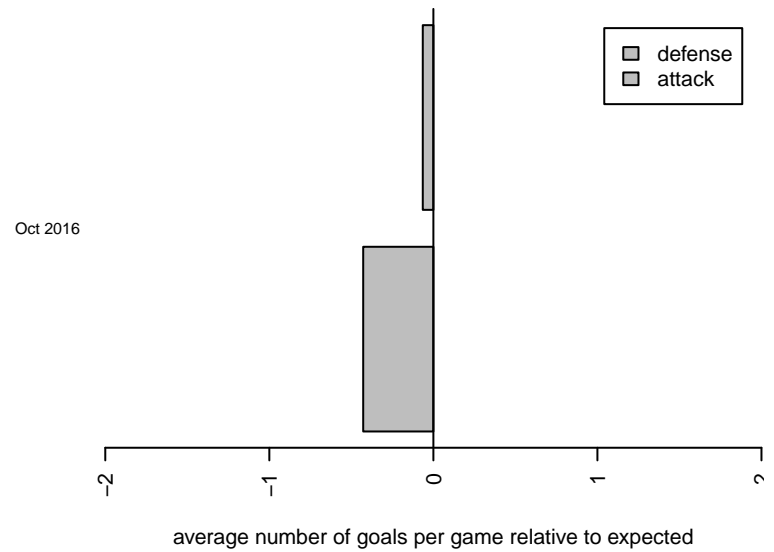
**attack and defense rating
relative to others at age
and all opponents in last 13 months**



Performance relative to 13 month average



Performance relative to 13 month average



date	home		away		venue	pred.home	pred.away
2016-10-29	Canyon Optimist Inferno B05	7	FC Nova Red B05	2	2016 Idaho D3 U12 East U12	7.66	1.82
2016-10-22	Sawtooth United Blue B05	1	Canyon Optimist Inferno B05	1	2016 Idaho D3 U12 East U12	1.67	5.65
2016-10-15	Canyon Optimist Inferno B05	7	UC United B05	1	2016 Idaho D3 U12 East U12	9.85	0.55
2016-10-09	Boise Nationals Timbers Green B05	1	Canyon Optimist Inferno B05	6	2016 GEM State Challenge U12B Silver Wes	0.98	5.13
2016-10-09	Canyon Optimist Inferno B05	4	Jackson Hole United Black B05	1	2016 GEM State Challenge U12B Silver Wes	3.52	0.80
2016-10-08	Canyon Optimist Inferno B05	5	Idaho Rush Black B05	2	2016 GEM State Challenge U12B Silver Wes	3.36	1.29
2016-10-08	Canyon Optimist Inferno B05	9	Mountain Home SC B05	1	2016 GEM State Challenge U12B Silver Wes	6.82	1.44
2016-09-17	Twin Falls Rapids B05	2	Canyon Optimist Inferno B05	8	2016 Idaho D3 U12 East U12	1.51	5.95
2016-09-15	Canyon Optimist Inferno B05	4	Boise Nationals Timbers Red B05	1	2016 Idaho D3 U12 East U12	3.08	1.94